

Ad hoc IPC Alert: Nipah Virus (NiV)

Date: 16 June 2026

Subject: Alert – Confirmed Nipah Virus Case in Kerala & IPC Advisory

All health care workers must strictly follow infection control protocols, use PPE and notify IPC team of any suspected cases immediately.

Situation Overview

Recent reports from Indian health authorities has confirmed an active case of **Nipah virus infection** in a 43 year old resident from Ramanattukara, Kozhikode district, **Kerala** on **11th June 2026**. The patient remains in critical condition on ventilator support at Government medical college hospital, Kozhikode. Health officials have successfully traced and isolated his contacts with no new infections reported. Local authorities have implemented strict containment, surveillance and contact tracing measures to prevent further spread of the disease. Given the high case fatality rate and potential for person to person transmission, heightened vigilance is essential.

About Nipah Virus

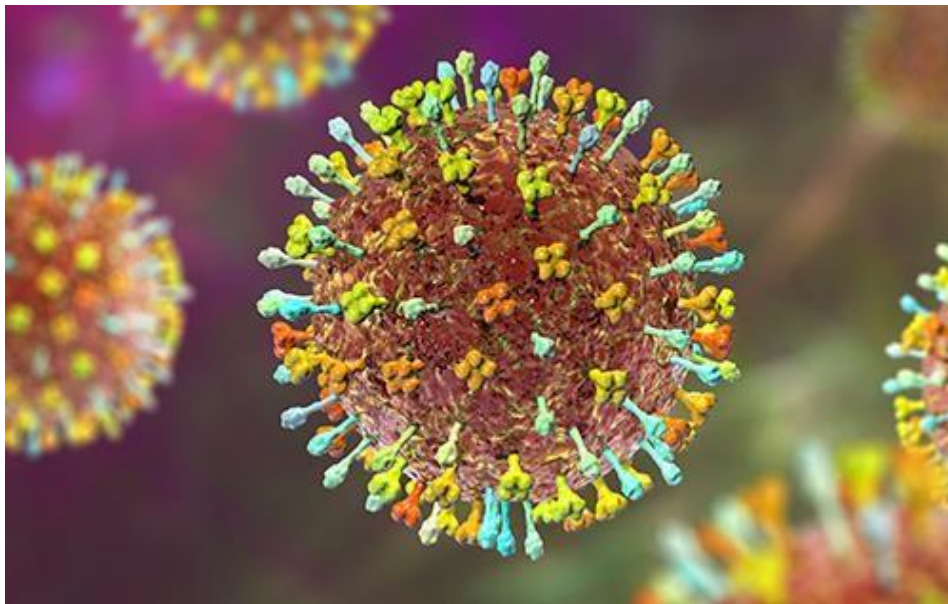
Nipah virus (NiV) is a zoonotic virus belonging to the **Paramyxoviridae** family. **Fruit bats (Pteropus species)** are the natural reservoirs. Human infection occurs through contact with infected animals, consumption of contaminated food, or close contact with infected individuals. There is no specific antiviral treatment or vaccine.

FRUIT BATS (PTEROPUS SPECIES)



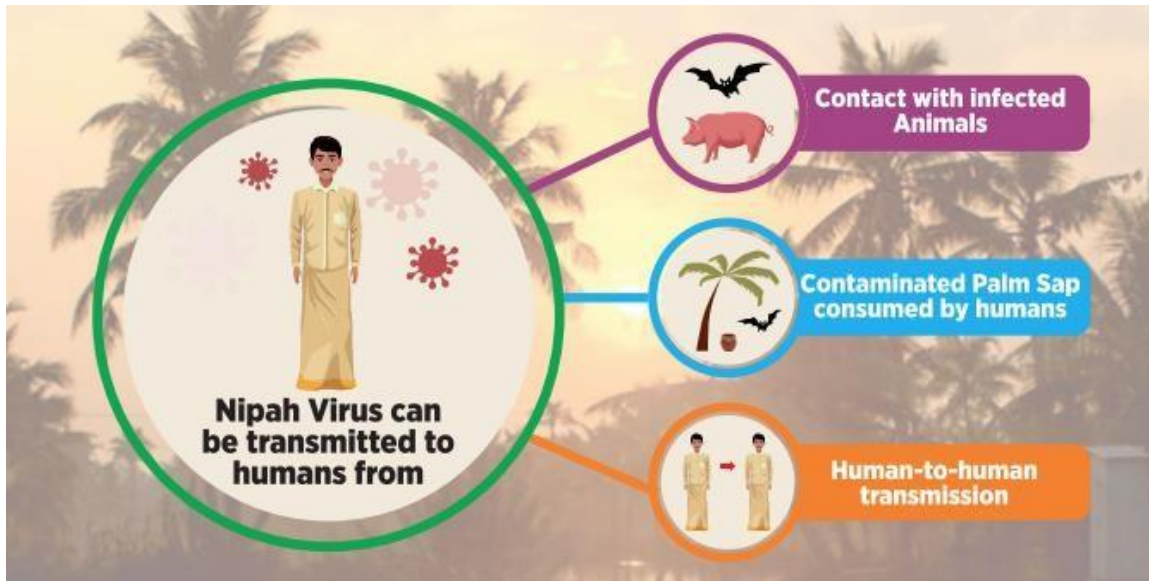
Source: WHO

STRUCTURE OF NIPAH VIRUS



Source: European Centre for Disease Prevention and Control

TRANSMISSION OF NIPAH VIRUS FROM ANIMALS TO HUMANS



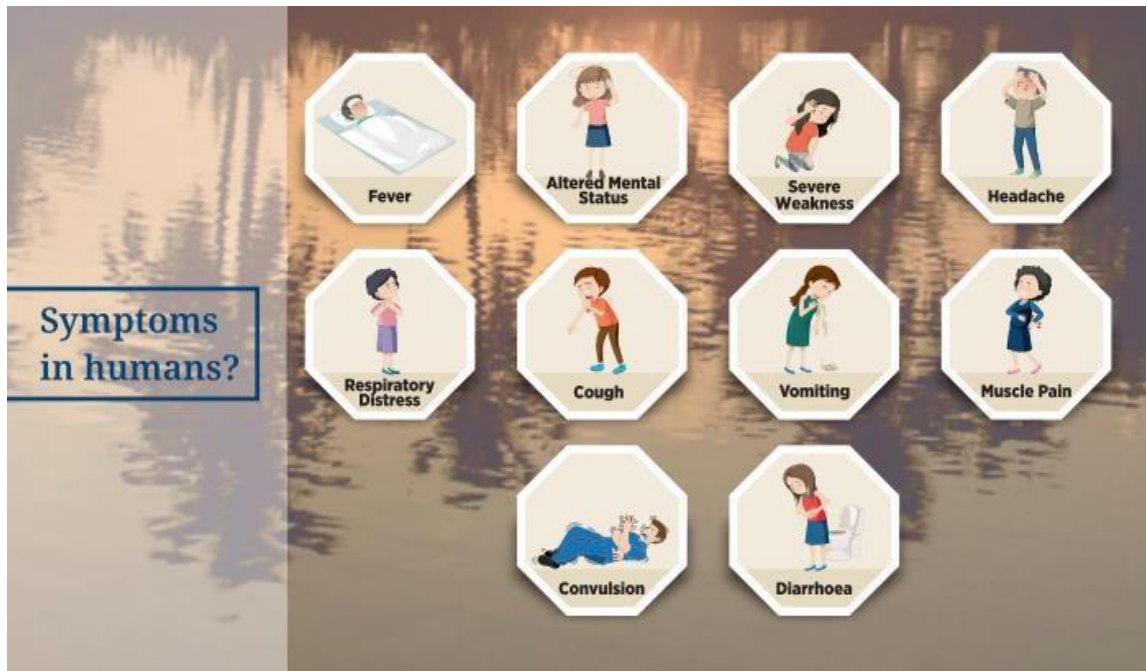
Source: NCDC

Clinical Features – Information for Healthcare Workers

- ❖ Early symptoms:
 - Fever
 - Headache
 - Myalgia
 - Vomiting
 - Sore throat
- ❖ Progressive / severe illness:
 - Acute respiratory distress
 - Altered sensorium, confusion
 - Encephalitis
 - Seizures and coma

Incubation period: 4–14 days (may extend up to 21 days).

SYMPTOMS OF NIPAH VIRUS INFECTION



Source: NCDC

Travel & Exposure History – Mandatory Screening

All patients presenting with fever, respiratory symptoms, or neurological signs should be screened for:

- Travel to affected areas (e.g., West Bengal) within the last 21 days
- Contact with confirmed or suspected Nipah cases
- Exposure to bats, pigs, or sick animals
- Consumption of raw date palm sap or potentially contaminated food products

Infection Prevention & Control Measures

- ❖ Standard and Transmission-Based Precautions:
 - Strict hand hygiene
 - Contact and droplet precautions for all suspected/confirmed cases
 - Airborne precautions during aerosol-generating procedures
- ❖ Personal Protective Equipment (PPE):
 - Gloves
 - Gown
 - N95 respirator or equivalent
 - Eye protection (goggles or face shield)
- ❖ Patient Management:
 - Isolate suspected/confirmed cases in single rooms
 - Restrict patient movement
 - Dedicated equipment wherever possible
- ❖ Environmental Cleaning:
 - Routine cleaning with hospital-approved disinfectants
- ❖ Healthcare Worker Monitoring:
 - Monitor exposed HCWs for symptoms for 21 days
 - Immediate reporting of symptoms to IPC team

Key IPC Messages

- Early identification and isolation save lives
- Adherence to PPE is mandatory
- Travel and exposure history is critical
- Prompt reporting to IPC team is essential

References

1. World Health Organization. Nipah virus fact sheet. Updated on 29th January 2026.
2. Centers for Disease Control and Prevention (CDC). Nipah Virus – Information for Healthcare Providers. Updated on 13th February 2026.
3. Ministry of Health & Family Welfare, Government of India – Nipah Virus Guidelines 2026.
4. National Centre for Disease Control (NCDC), India – Advisory on Nipah Virus 2026.

Prepared by:

Dr Iswarya M
Assistant professor
Department of Microbiology
TMCH.

Verified by:

Dr Priya Santharam
Member Secretary
IPCC Committee
TMCH

